

Product Facts

Important facts you need to know about glass pool linings.

Glass Aggregate is the future of Pool Interiors

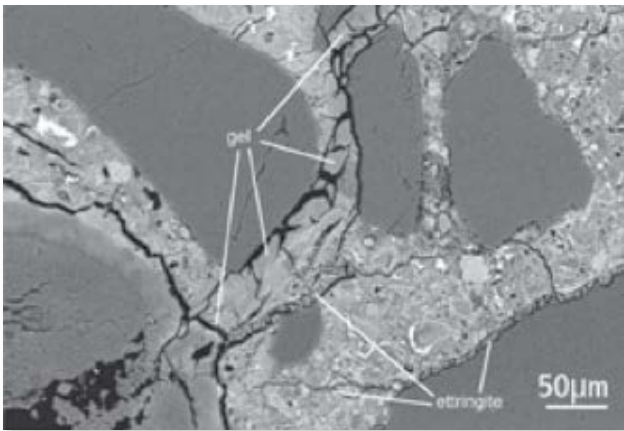
We Recognised this 10 years ago. 100% pure crystal aggregates are super durable and when used without oxides in the mortar the pool finish will never fade.

Glass Aggregate Has A Very High Percentage Of Amorphous Silica. So What You Say? Well, This Reacts With The Alkali Hydroxides In Cement. A Reaction Called Alkali Silica Reaction. (A.S.R).

Glass And High Silica Aggregates Will Produce A.S.R In Cement Based Products And Is A Major Drawback For Its Use In Cementitious Formulations.

Tests Have Proven That The Incorporation Of Glass Aggregates In Unmodified Mortars Will Reduce The Mechanical And Flexural Strength's Significantly. The Glass\Quartz Aggregate Reacts With The Portland Cement.

A Reaction Between Calcium Hydroxide And Silicic Acid. This Reaction Forms A Gel, Calcium Silicate Hydrate. The Gel Forms In The Voids Around The Aggregates This Then Absorbs Water, Swells And Forms Cracks Eventually Leading To Product Failure.

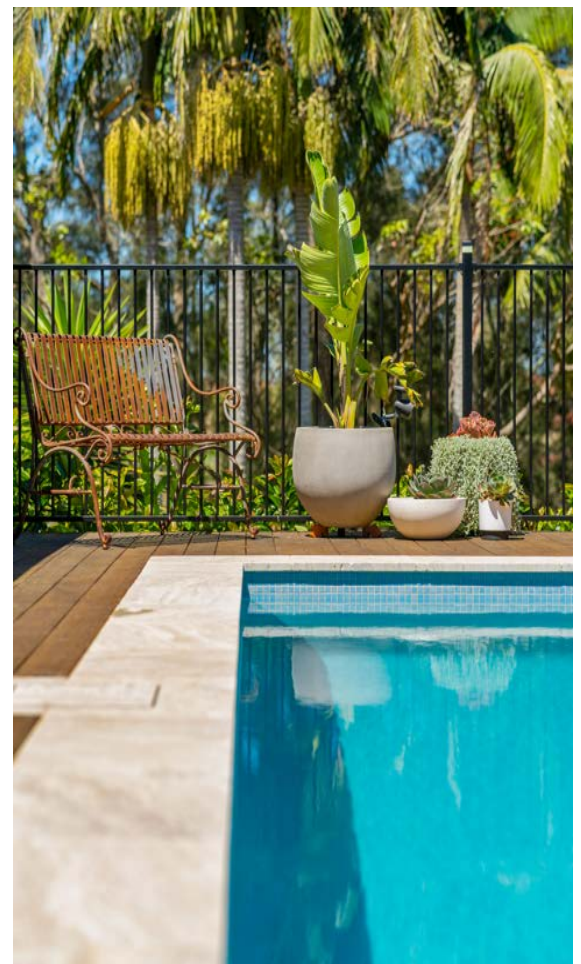


ASR Can be Eliminated.

From pool renders based on glass\quartz aggregate.

With Proper Mix Design Full Mitigation Can Be Achieved. But At A Cost. Formulations Will Become Considerably More Expensive. And Very Hard To Apply. Basic Steps For Mitigation Would Be.

1. To Reduce The Water Cement Ratio.
 2. Glass Aggregates Must Be Clean Without Clay Coatings Or Any Other Fine Materials That Could Alter The Hydration And Bond Of Cement Pastes. Almost Impossible To Achieve With Pre-Mixed Products.
 3. Carefully Selected And Graded Pozzilans To Reduce Microscopic Pore Size And Mobility Of The Alkali
 4. Aggregate Particle Size Smaller Than 1Mm To Further Reduce The Reaction
 5. Polymerisation To Help With Adhesion And Reduce Pore Liquid.
- A.S.R Is Caused By The Reaction Between The Hydroxyl Ions In The Alkaline Cement Pore Solution Within The Mortar And Reactive Forms Of Silica In The Aggregates. The Addition Of A Polymer Alone Will Only Increase This Effect.





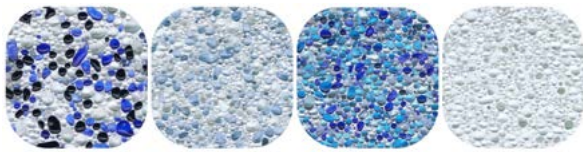
Geo Polymer Additive

Is The Only Product Available Today Specifically Formulated To Alleviate A.S.R With Glass/Quartz Aggregates In Cement Based Pool Renders. Beware Of Imitations

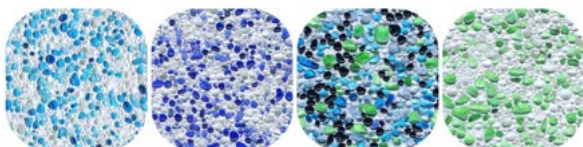
Jewels 4 Pools Geo Polymer Additive Will:

1. Reduce Water Cement Ratio
2. Increase Mechanical And Flexural Strength
3. Increase Adhesion
4. Increase Workability
5. Reduce Permeability
6. Eliminate A.S.R

Geo Polymer Additive Is Only Available Through Jewels 4 Pools



Ask us about our range of colours today!



About us!

Given We Have Had 30 Years Experience With Pool Renders And Render Formulations We Have Developed Our Products With These Setbacks In Mind. In Addition To This Our Products Have Been Tested For 8 Years To Ensure Proper Mitigation Against This Reaction.

Control Samples Are Available For Independent Tests If Required.

Our Promise Is:

- We Are Not Premixed With Other Aggregates, Clays Or Hydration Altering Powders Prior To Use.
- We Are The Only Glass Aggregate Available Specifically Graded To Further Reduce A.S.R
- Secret Formulation Is A Highly Modified Polymer Additive Only Available Through Us.

If Choosing A Pool Interior Consisting Of Glass\Quartz Aggregates Be Absolutely Sure The Product Has Been Modified Accordingly.

Remember Geo Polymer Additive Is Only Available Through Jewels 4 Pools.

Jewels 4 Pools Guarantees It's Products Or The Use Of It's Products Will Not Infringe The Rights Of Others

Contact Details

Marketing & Sales:

Crystal Yu

Email: Crystal@Jewels4Pools.Com

Mobile: 0447 459 269

Technical Advice:

Jeff Mcalister

Mobile: 0408 248 134